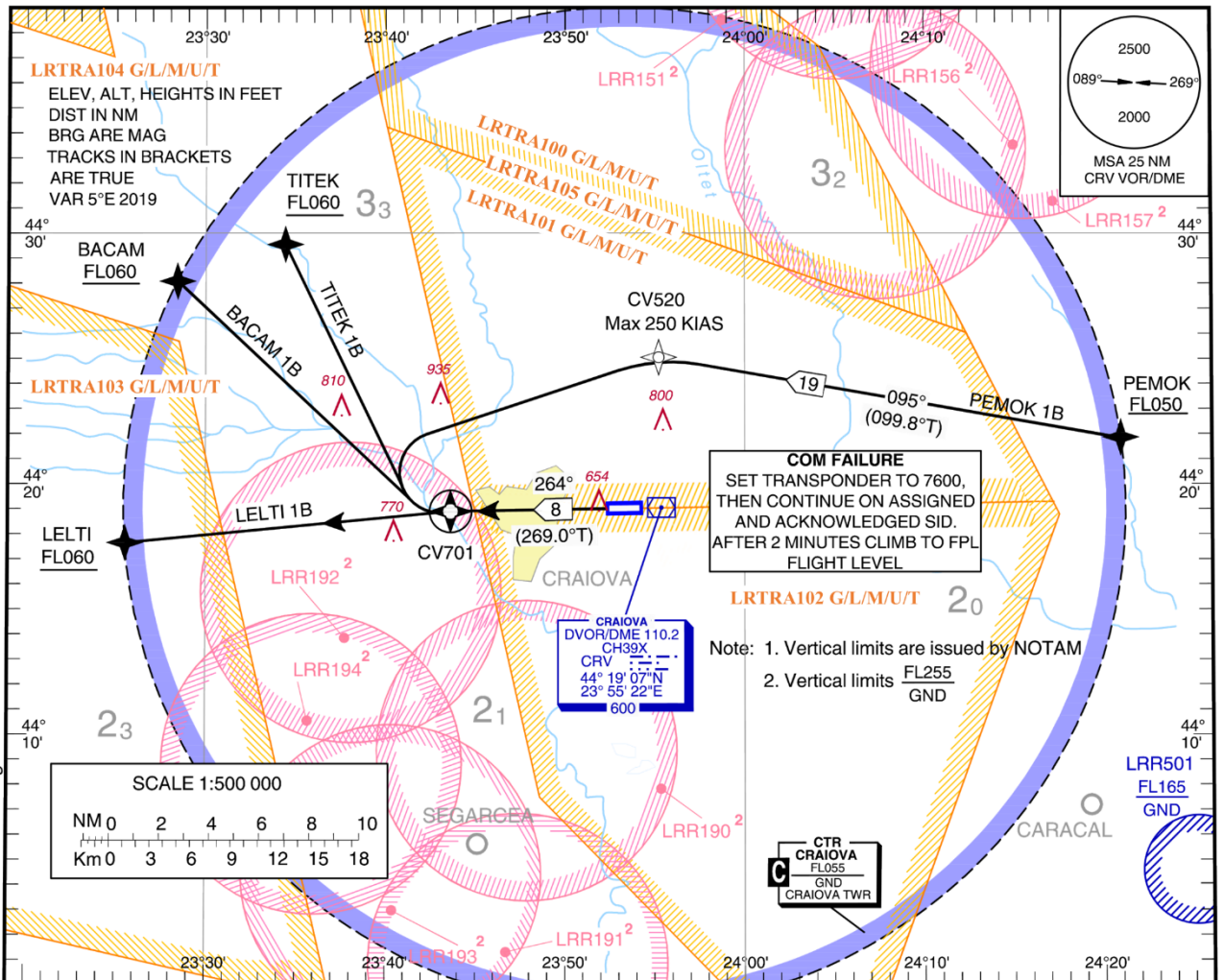


LRCV/ CRA
STANDARD INSTRUMENT DEPARTURE CHART
(SID) - ICAO

CRAIOVA, ROMANIA
RNAV1 (GNSS) RWY 26
BACAM 1B, LETI 1B, PEMOK 1B, TITEK 1B

TRANSITION ALTITUDE
4000

GRANAT Tower 124.575
GRANAT Tower ALTN 122.100



SID Identifier	DESCRIPTION
BACAM 1B	Climb to CV701 on course 264°M . At CV701 , turn RIGHT (Max 250 KIAS), direct to BACAM at or above FL060 .(1) (1) ATS climb gradient: 4.8% up to BACAM , due to airspace restriction. Advise ATC if unable to ensure the ATS climb gradient.
LETI 1B	Climb to CV701 on course 264°M . At CV701 , turn LEFT (Max 250 KIAS), direct to LETI at or above FL060 .(1) (1) ATS climb gradient: 4.6% up to LETI , due to airspace restriction. Advise ATC if unable to ensure the ATS climb gradient.
PEMOK 1B	Climb to CV701 on course 264°M . At CV701 , turn RIGHT direct to CV520 (Max 250 KIAS), then to PEMOK at or above FL050 .
TITEK 1B	Climb to CV701 on course 264°M . At CV701 , turn RIGHT (Max 250 KIAS), direct to TITEK at or above FL060 .(1) (1) ATS climb gradient: 5.7% up to FL060 , due to airspace restriction. Advise ATC if unable to ensure the ATS climb gradient.

LRCV/ CRA

CRAIOVA, ROMANIA

RNAV1 (GNSS) RWY 26

BACAM 1B, LELTI 1B, PEMOK 1B, TITEK 1B

AERONAUTICAL DATA TABULATION

RNAV1 (GNSS) SID RWY 26		
<i>Waypoint Identifier</i>	<i>Coordinates</i>	
CV701	44°18'57.2" N	023°43'38.4" E
CV520	44°25'06.9" N	023°55'12.8" E
BACAM	44°28'07.0" N	023°28'26.0" E
LELTI	44°17'40.0" N	023°25'32.0" E
PEMOK	44°21'52.9" N	024°20'54.5" E
TITEK	44°29'35.8" N	023°34'25.9" E
DER 26	44°19'04.3" N	023°51'59.7" E

TABULAR DESCRIPTION

RNAV1 (GNSS) SID RWY 26												
<i>Serial No</i>	<i>SID ID</i>	<i>Path Descriptor</i>	<i>Waypoint ID</i>	<i>Flyover</i>	<i>Course °M (°T)</i>	<i>Magnetic Variation</i>	<i>Distance (NM)</i>	<i>Turn Direction</i>	<i>Altitude (ft)</i>	<i>Speed (kts)</i>	<i>VPA/TCH</i>	<i>NAV SPEC</i>
010	BACAM 1B	CF	CV701	Y	264 (269.0)	5.0E	8	-	-	-	-	RNAV 1
020	BACAM 1B	DF	BACAM	-	-	5.0E	-	-	+FL060	-	-	RNAV 1
010	LELTI 1B	CF	CV701	Y	264 (269.0)	5.0E	8	-	-	-	-	RNAV 1
020	LELTI 1B	DF	LELTI	-	-	5.0E	-	R	+FL060	-	-	RNAV 1
010	PEMOK 1B	CF	CV701	Y	264 (269.0)	5.0E	8	-	-	-	-	RNAV 1
020	PEMOK 1B	DF	CV520	-	-	5.0E	-	-	-	-250	-	RNAV 1
030	PEMOK 1B	TF	PEMOK	-	095 (099.8)	5.0E	19	-	+FL050	-	-	RNAV 1
010	TITEK 1B	CF	CV701	Y	264 (269.0)	5.0E	8	-	-	-	-	RNAV 1
020	TITEK 1B	DF	TITEK	-	-	5.0E	-	-	+FL060	-	-	RNAV 1